

## Pre-Registration Form

*“Summer Learning Out-of-Doors!”*

Group Programs at Nature’s Edge

Please enroll my child in the following learning group(s):

- ◇ Learning Social Skills on the Ranch, Group #1 or Group #2 (Please circle)
- ◇ Meet Me at the Reading Tree
- ◇ “Stable” Life Skills!
- ◇ Preschool Outdoor Play
- ◇ Staying Active in Nature/Sibling Fun

Child’s Name: \_\_\_\_\_

Age \_\_\_\_\_ Date of birth \_\_\_\_\_

Address \_\_\_\_\_

City/State \_\_\_\_\_

Zip \_\_\_\_\_ Home Phone \_\_\_\_\_

Parent/Legal Guardian Name: \_\_\_\_\_

Cell Phone \_\_\_\_\_

Email \_\_\_\_\_

- ◇ Please send me information on scholarships?

Check enclosed for \$ \_\_\_\_\_

All group programs are taught by licensed and qualified professionals. Our ranch setting is the perfect environment to accelerate learning through summer fun and the motivation of animals and nature!



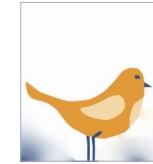
*Nature’s Edge Therapy Center, Inc. is a 501(c)(3) non-profit organization. The mission of Nature’s Edge is to provide the highest quality of intensive rehabilitation by qualified and licensed staff in a safe, natural and motivational setting, promoting the human-animal bond. Our ultimate goal is to facilitate growth in independence and integration into family, school and society. Join in on fun summer outdoor learning sessions!*



### Nature’s Edge Therapy Center, Inc.

2523 14 3/4 Avenue  
Rice Lake, WI 54868

Phone: 715-859-6670  
Fax: 715-859-6669  
E-mail: [naturesedge@citizens-tel.net](mailto:naturesedge@citizens-tel.net)  
[www.naturesedgetherapycenter.org](http://www.naturesedgetherapycenter.org)



# 2017 Summer Learning OUT-OF- DOORS!

## Group Programs at Nature’s Edge

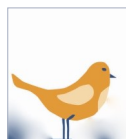




## 2017 Summer Learning Groups – **OUTDOOR fun and Learning!**

### June! Meet Me at the Reading Tree

**Ages 5-9**



Struggling readers will be actively engaged in outdoor and equine activities to focus on the tasks of hearing, breaking apart and blending sounds that make up words, recognizing sight words, understanding word and text meanings, and reading with expression. The barn, forest paths, river, pond, garden — and of course, the Reading Tree will be learning sites for readers. **When:** Wednesdays & Fridays, 1:30-3:00 p.m., June 14, 16, 21, 23, 28 and 30. All participants must be accompanied by a parent or guardian. **COST:** \$225. Early Bird discount of \$25 for registration by May 1! Maximum enrollment of 8 readers.

### July & August! Learning Social Skills on the Ranch



**2 groups: Ages 7-12 & 13-18**

Outdoor activities integrated with nature and animals (including equine-assisted activities) will be used to teach social skills. Eye contact, greetings, making requests, turn-taking in conversation, expressing feelings and paying attention to non-verbal commu-

nication are themes that will be discussed and role-played. Homework is provided for practice in everyday activities. Led by an SLP. **When:** Ages 13-18—Wednesdays & Fridays, July 12, 14, 19 & 21, 1:30-3 p.m. Ages 7-12—Wednesdays & Fridays, Aug. 9, 11, 16 & 18, 1:30-3 p.m. All participants must be accompanied by a parent or guardian. **COST:** \$150. Early Bird discount of \$15 for registration by May 1! Maximum enrollment of 6 per group.

### July & August! Staying Active in Nature/Sibling Fun



**Ages 6-18**

Nature is our playground and animals are our companions as we run, jump, hike, climb and dig at the Nature's Edge ranch. Explore our 65-acre ranch and meet our many animals — from dogs to horses to pigs to cats. This group, led by an OT, will promote physical activity and help children and youth gain skills and concepts for achieving a healthy and active lifestyle through fun, play-based activities on a horse ranch. This group is great for siblings to enjoy together! For siblings, second registration is half-price. Bring a sandwich to picnic after class. **When:** Thursdays, July 13, 20, 27 & Aug. 3, 10:30 a.m.-Noon. All participants must be accompanied by a parent or guardian. **COST:** \$150. Early Bird discount of \$15 for registration by May 1! Maximum enrollment of 10.

### July & August! Preschool Outdoor Play



**Ages 3-5**

Outdoor fun play activities will promote language development, play skills and peer-to-peer interaction. Gardening, nature trails, animal interactions and playground fun will fill the hour. Great preparation for school! Bring a sandwich to picnic after class! **When:** Fridays, 11 a.m.-Noon, July 14, 21, 28 & Aug. 4. All participants must be accompanied by a parent or guardian. **COST:** \$150. Early Bird discount of \$15 for registration by May 1! Maximum enrollment of 6.

### August! "Stable" Life Skills



**Ages 12-18**

Life skills such as cooking, cleaning, self-cares and employment are necessary for successful participation in all aspects of life. Meet us in the barn to immerse yourself in learning the necessary skills of responsibility, respect, taking directions and active listening through outdoor activities, animal interactions, chores and teamwork games. **When:** Thursdays, 1:30-3 p.m., Aug. 3, 10, 17 & 24. All participants must be accompanied by a parent or guardian. **COST:** \$150. Early Bird discount of \$15 for registration by May 1! Maximum enrollment of 6.